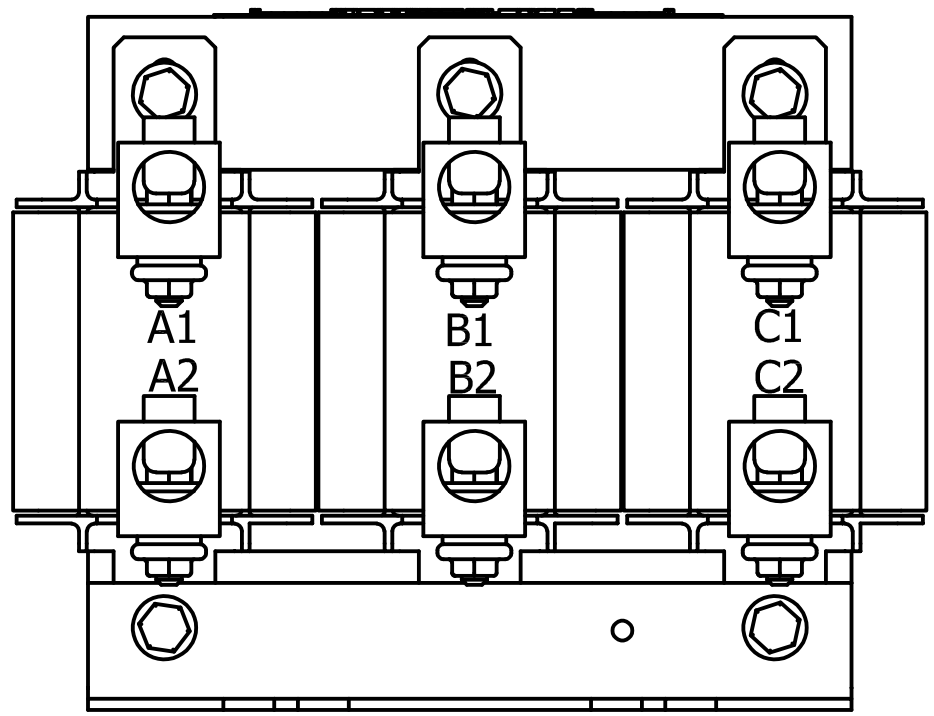


6 Plcs  
A1, B1, C1  
A2, B2, C2



Parts List			
TCI Part #	Description	Quantity	Item #
14927	Lug 250MCM	6	1LK
1745	Hex Hd Bolt 1/4-20 X 1 In	6	2LK
1505	Nut 1/4-20	6	3LK
1763	Flat Washer 1/4"	12	4LK

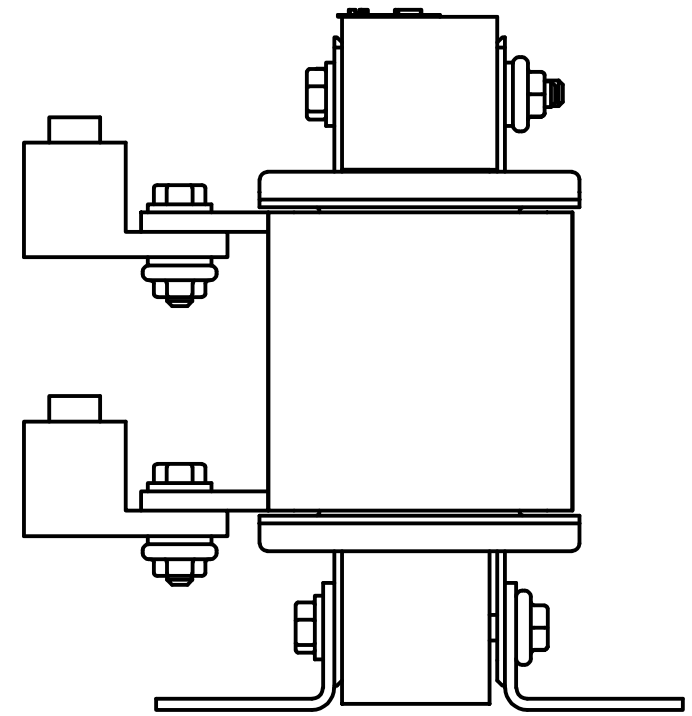
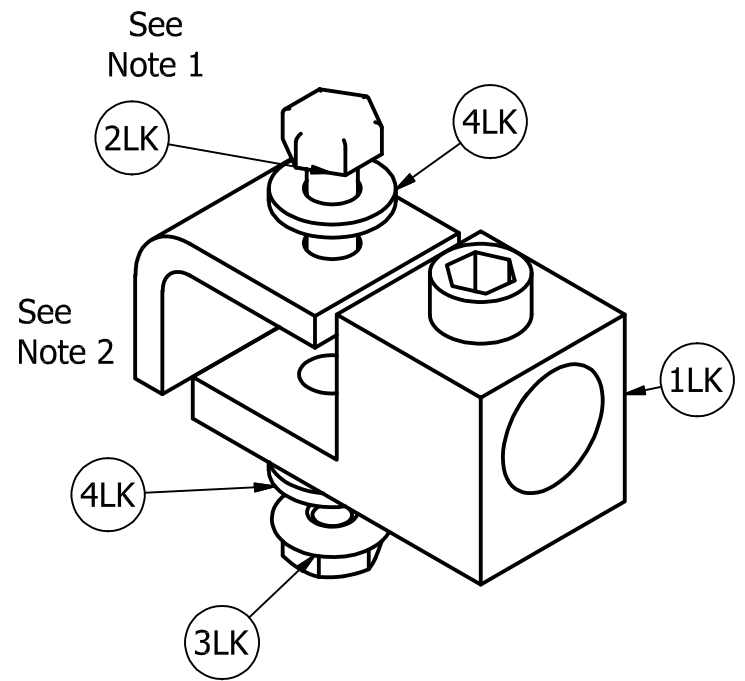


Table S250					IHI Connectors	
Wire Size Copper (solid to semi-rigid stranded and metric mm <sup>2</sup> , ##)	Rating C	Wire Size FLEX Copper (#)	Wire Size Aluminum	Torque (all drive means)		
250kcmil-2	90	3/0-2 AWG 70-50 mm <sup>2</sup>	250-2	375 in-lb (42.4 N-m)		
(1),(2) 25-16 mm <sup>2</sup> (1) 35 mm <sup>2</sup>	90	2-6 AWG 35-16mm <sup>2</sup>	2-6	275 in-lb (31.1 N-m)		



Pressure Terminal Connectors  
NRTL Cat. No.  
**S250**

250kcmil-6 AL9CU

Follow NEC guidelines to determine acceptable wire ampacity requirements.

- Notes:
- 1.) Torque bolts (Item #2LK) to 66 in-lb (7.5 N-m).
  - 2.) To prevent lug from rotating place lug on underside of tab as shown.

				TOLERANCES (EXCEPT AS NOTED)		W132 N10611 Grant Drive Germantown, WI 53022  Lug Kit, 250MCM-6
				DECIMAL		
				.XX ± .25 .XXX ± .10		
				FRACTIONAL ± 1/16		
				ANGULAR ± 1°		DRN. BY: DSW
						DATE: 10/2/17
						LK21-Dwg
						SCALE: B
						APRVD: SHT.1 OF 1
NO	REVISION	DATE	BY			

4

3

2

1