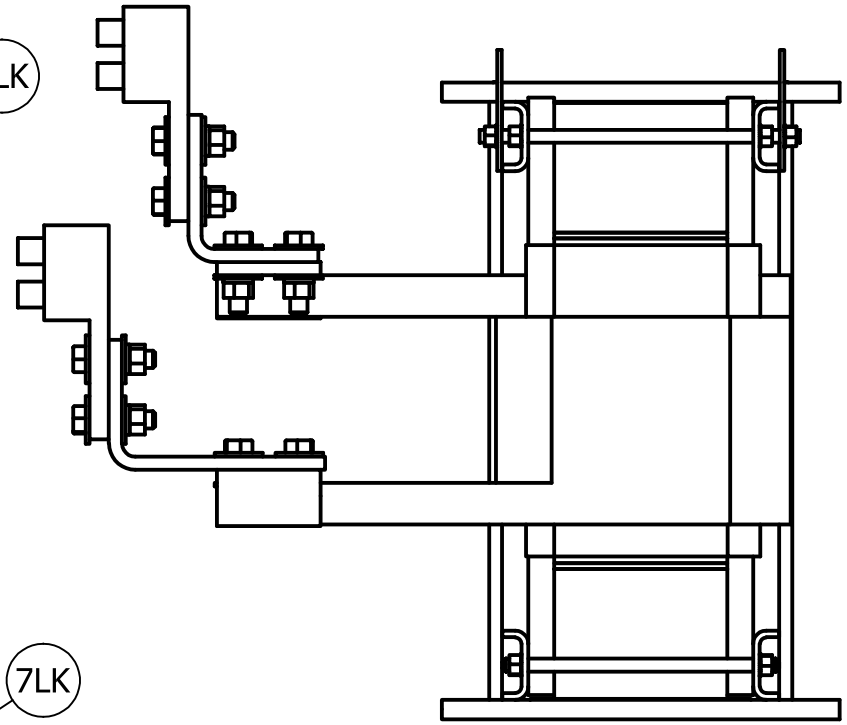
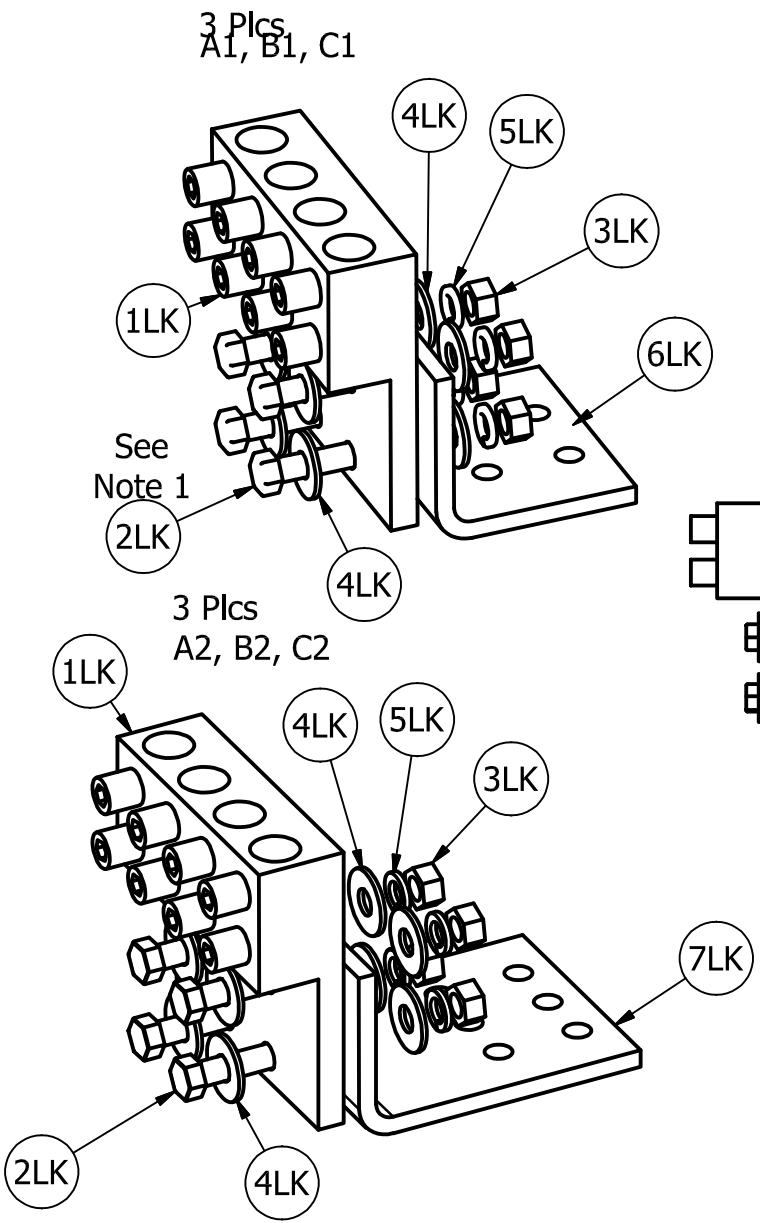
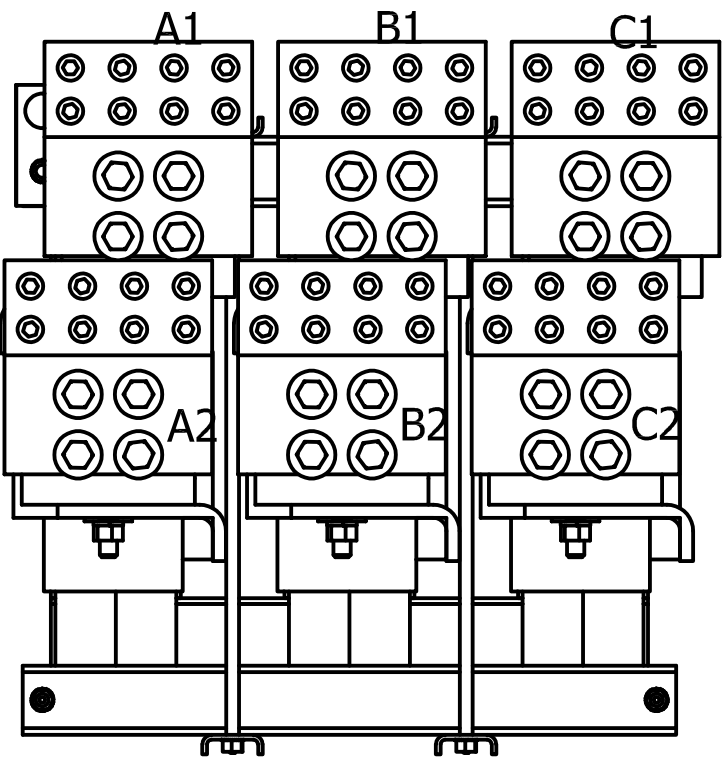


Parts List			
TCI Part #	Description	Quantity	Item #
24873	Lug Four 800 kcmil	6	1LK
10251	Hex Hd Bolt 1/2-13 X 2 In	36	2LK
1610	Nut 1/2-13	36	3LK
1512	Flat Washer 1/2"	72	4LK
1511	Split Lock Washer	36	5LK
24882	Term, Bar, With Bend/Holes.	3	6LK
24883	Term, Bar, With Bend/Holes.	3	7LK

* T4A4-800N
 * CSA Certified.
 * UL 486A/B Listed, UL File E6207
 * Must be mounted with a minimum of 4 bolts

Table T4A4-800N				
Item ID	Conductor Range	Bolt/Stud Size	Hex Size	Tightening Torque
T4A4-800N	800kcmil-300kcmil	1/2	1/2	500 in-lb (56.5 N-m)



Notes:
 1.) Torque bolt (Item #2LK) to 450 in-lb (50.8 N-m).

Follow NEC guidelines to determine acceptable wire ampacity requirements.

				TOLERANCES (EXCEPT AS NOTED)		TCI W132 N10611 Grant Drive Germantown, WI 53022
				DECIMAL		
				.XX ± .25		Lug Kit, 4-800MCM-300, With Bent Bar
				.XXX ± .10		
				FRACTIONAL		DRN. BY: JRN DATE: 9/11/17 LK18-BB-Dwg
				± 1/16		
				ANGULAR		SCALE: APRVD: SIZE: B SHT.1 OF 1
				± 1°		
NO	REVISION	DATE	BY			

4

3

2

1