

CUSTOMER CONNECTIONS INTO SINEWAVE FILTER

CUSTOMER CONNECTIONS

480 VOLTS
80Hz MAX

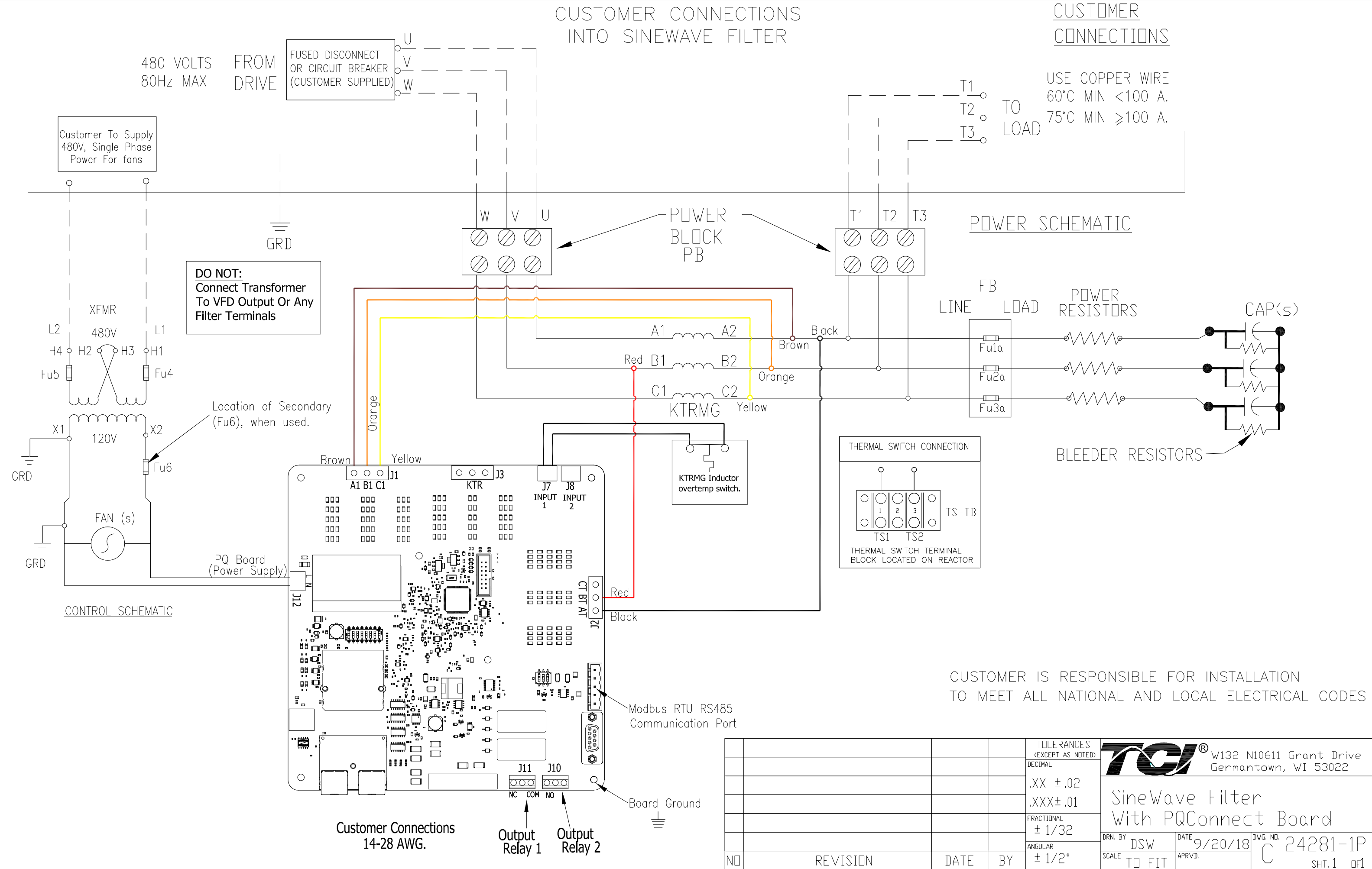
FROM DRIVE

FUSED DISCONNECT OR CIRCUIT BREAKER (CUSTOMER SUPPLIED)

USE COPPER WIRE
60°C MIN <100 A.
75°C MIN ≥100 A.

Customer To Supply 480V, Single Phase Power For fans

DO NOT:
Connect Transformer To VFD Output Or Any Filter Terminals



POWER SCHEMATIC

CONTROL SCHEMATIC

CUSTOMER IS RESPONSIBLE FOR INSTALLATION TO MEET ALL NATIONAL AND LOCAL ELECTRICAL CODES

Customer Connections 14-28 AWG.

Output Relay 1
Output Relay 2

NO	REVISION	DATE	BY

TCI® W132 N10611 Grant Drive
Germantown, WI 53022

SineWave Filter
With PQConnect Board

DRN. BY DSW DATE 9/20/18 DWG. NO. 24281-1P
SCALE TO FIT APRVD. SHT. 1 of 1