

480V.  
60 HZ.  
LINE

FUSED DISCONNECT  
OR CIRCUIT BREAKER  
(CUSTOMER SUPPLIED)

CUSTOMER CONNECTIONS

T1  
T2 LOAD  
T3

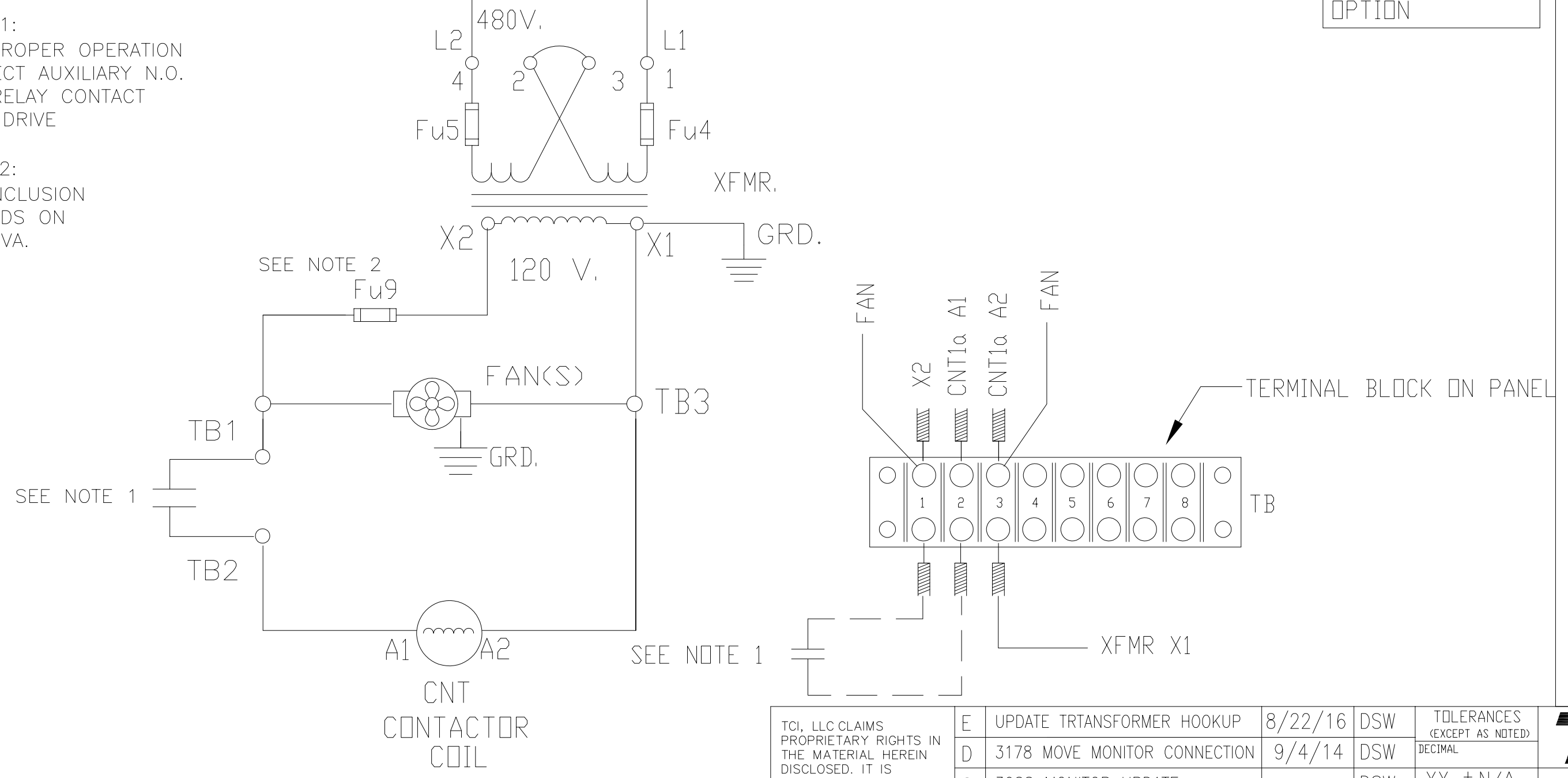
CUSTOMER CONNECTIONS  
75 HP AND BELOW : USE MINIMUM 60°C COPPER WIRE  
ABOVE 75 HP : USE MINIMUM 75°C COPPER WIRE

FACTORY POWER CONNECTIONS

CONTROL CONNECTIONS

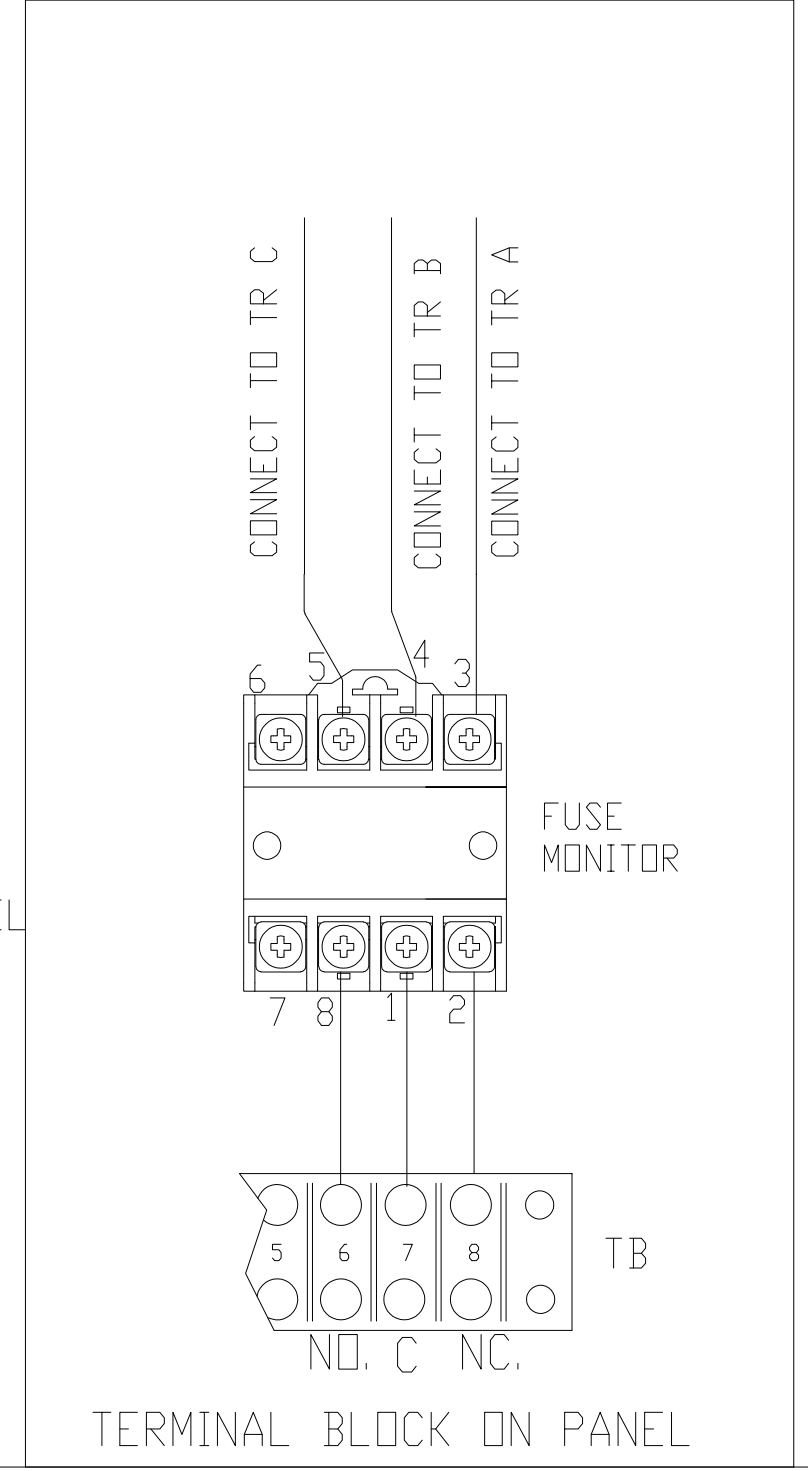
NOTE 1:  
FOR PROPER OPERATION  
CONNECT AUXILIARY N.O.  
RUN RELAY CONTACT  
FROM DRIVE

NOTE 2:  
Fu6 INCLUSION  
DEPENDS ON  
XFMR VA.



CONNECTIONS FOR  
FUZE MONITOR  
OPTION

SCHEMATIC FOR FUZE MONITOR, OPTION



TCI, LLC CLAIMS PROPRIETARY RIGHTS IN THE MATERIAL HEREIN DISCLOSED. IT IS SUPPLIED WITHOUT PREJUDICE TO ANY PATENT RIGHTS OF TCI AND MAY NOT BE REPRODUCED OR USED TO MANUFACTURE ANYTHING SHOWN THEREIN WITHOUT WRITTEN PERMISSION FROM TCI.	E	UPDATE TRTRANSFORMER HOOKUP	8/22/16	DSW	TOLERANCES (EXCEPT AS NOTED) DECIMAL
	D	3178 MOVE MONITOR CONNECTION	9/4/14	DSW	.XXX ± N/A
	C	3088 MONITOR UPDATE		DSW	.XXX ± N/A
	C	SWITCH PHASE A TO C	4/25/14	DSW	FRACTIONAL ± N/A
	B	SWITCH CNT AND TR	4/3/14	DSW	ANGULAR ± N/A
	A	2999 CHG MONITOR CONNECTION	1/8/2014	DSW	± N/A
NO	REVISION	DATE	BY	± N/A	

**TCI**® W132 N10611 Grant Drive  
Germantown, WI 53022

**HARMONICGUARD PASSIVE**  
480V SCHEMATIC  
ENCLOSED TYPE1 WITH DIST BLOCK  
FAN, CONTACTOR VERSION.

DRN. BY DSW DATE 11/11/13 DWG. NO. 28697-5  
SCALE NONE SIZE C SHT.1 OF1